

## PRINTABLE INFO SHEET

Series: Landmark Ranch

Model: 2LM1003P Elm



### About This Model

Style: Ranch / Bedrooms: 3 / Bathrooms: 2 / Square Feet: 1387



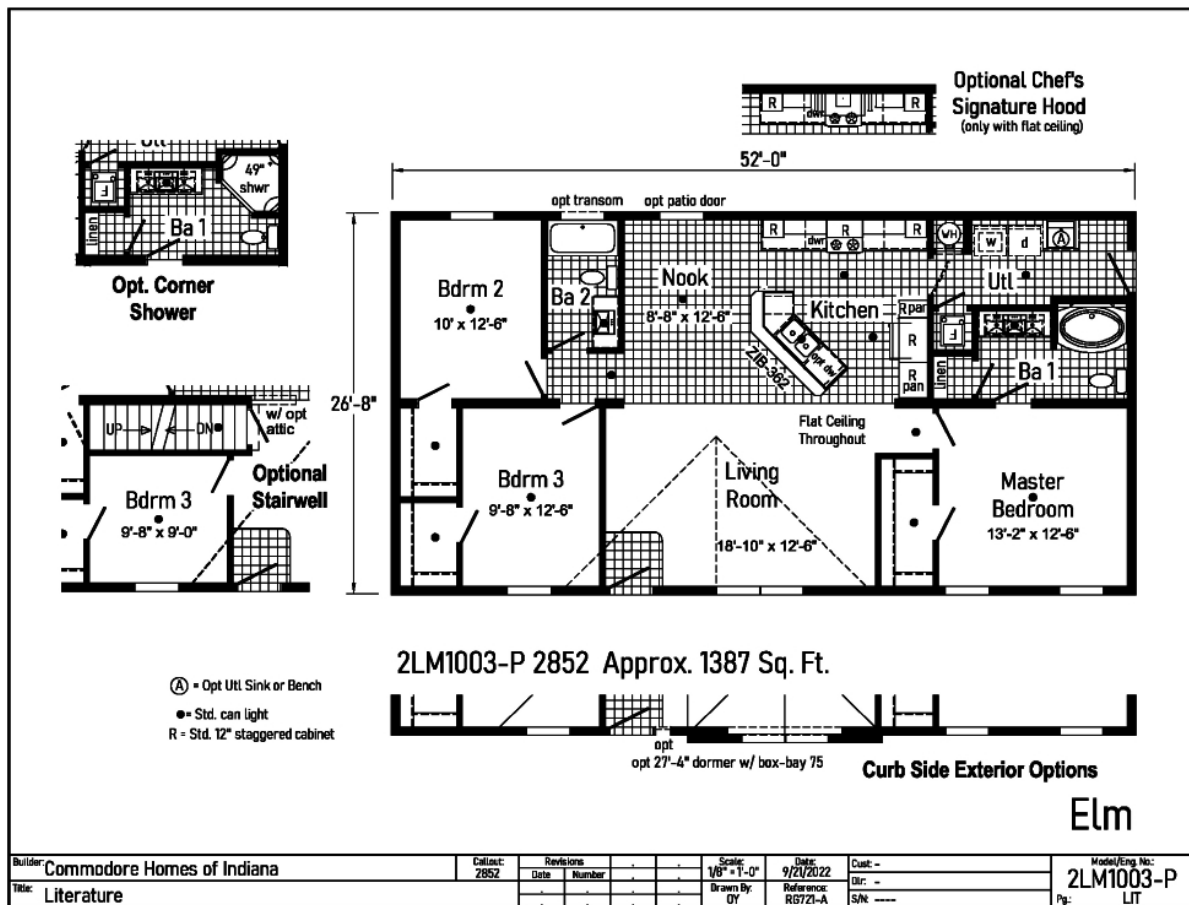
## PRINTABLE INFO SHEET

Series: Landmark Ranch

Model: 2LM1003P Elm



## Floorplan



## CUSTOMER CONTACT

Notes:

---



---



---



---

## PRINTABLE INFO SHEET

**Series: Landmark Ranch**

**Model: 2LM1003P Elm**



## Standards & Features

### Interior

Smooth Drywall Throughout  
Flat Ceiling Throughout  
Stipple Ceiling  
Coveless Ceiling Joints  
8' Sidewall Height  
Brushed Nickel 5-Arm Dining Room Light  
Recessed LED Lighting  
Mortise Door Hinges  
Metal Interior Passage Sets  
Door Stops  
2 1/4" Door & Window Casing  
3" Baseboard Moulding  
Smooth 6-Panel Doors  
Smoke Detectors with Battery Back-Up  
Wire Shelving in Guest Closet  
Brushed Nickel Interior Hardware and Lighting

### Exterior

Patina Coach Light at Front Door  
Patina Coach Light at Rear Door  
Two GFI-Protected Exterior Receptacle  
Vinyl Dutch Lap Siding with Larger  
Starter Strip to Cover Sill Plate  
O.S.B. Sheathing  
Fixed Roof with 10" Eaves (26'8" & 30')  
16" Eaves (27'4")  
Ridgevent Roof Ventilation System  
3/0x6/8 6-Panel Fiberglass Front and Rear  
Door with Deadbolt Lock  
MI Vinyl Insulated Low-E Windows (Gridless)  
Raised Panel Shutters on Front Door Side

### Kitchen

Whirlpool Deluxe 30" Gas Free Standing  
Range  
Power Range Hood with Light  
Whirlpool 18 Cubic Foot, No-Frost Refrigerator  
w/ Ice maker  
Stainless Steel Double Bowl Sink (33x22x8)  
Tight Mesh Shelving in Pantry  
One USB Receptacle

### Baths

One Piece Fiberglass Tub/Showers  
Garden Tub/Showers-Master Bathroom  
Tub Overflows  
Anti-Scald Valves on Showers & Tubs  
1.6 Gallon Per Flush Elongated Toilets  
China Stool, Tank, and Lid  
China Sinks with Overflows and Pop-Up Drains  
Lighted Vent Fan in Each Bath  
2-Arm Infinity Bath Lights  
Pencil Edge Mirrors

### Cabinetry

Hardwood Stiles  
3/4 Overlay Hardwood Mission Flat  
Panel Cabinet Doors  
Evermore Custom Cabinetry (KCMA Certified)  
Crown Moulding on Overhead Cabinets  
Transitional Cabinet Hardware  
30"/42" Staggered Wall Overhead Cabinets  
or 42" Overhead Cabinets  
Lined Overhead Cabinets  
Adjustable Shelves in Overhead Staggered Cabinets

## CUSTOMER CONTACT

Notes:

---

---

---

---

## PRINTABLE INFO SHEET

**Series: Landmark Ranch**

**Model: 2LM1003P Elm**



## Standards & Features (continued)

### Cabinetry (continued)

Dovetail Drawer Construction

75#Drawer Guides

Base and Center Shelf in Base Cabinets

WilsonArt Laminate Countertops with

Laminate Edging

4" WilsonArt Laminate Backsplash

36" High Vanities

Base Shelf in Vanities

Bump-out Staggered Wall Cabinet over Range

Refrigerator Surround

### Utilities

200 AMP Electrical Service

Copper Wiring Throughout

95 Plus Efficient Gas Furnace

- Perimeter Heat

- Woodgrain Furnace Door

- Fiberglass Heat Ducts

- Air Return System

Air Conditioning Thermostat with 5-Wires

40 Gallon Electric Water Heater with Pan

Structured Flow Brushed Nickel Faucets

Main Water Line Shut-Off Valve

Water Shut-Off Valves - Where Accessible

Plumb and Wire for Washer

Wire and Vent for Dryer

One Exterior Water Faucet

Recessed Dryer Box (where applicable)

### Insulation

R-19 Fiberglass Insulation in Walls

R-38 Avg. Blown Insulation in Ceiling

### Flooring

Choice of Various Styles of SHAW 15 oz.

Carpet w/ ShawGuard Carpet Protector

Rebond Carpet Pad with Tackstrip

Carpet Installation

No-Wax Vinyl Floor Coverings

Entry Foyer Vinyl Flooring

### Bedrooms

Ceiling Lights

Egress Window Each Bedroom

Wire Shelving in Wardrobes

4" LED Light in All Walk-In Closets

### Construction

2x10 Floor Joists 16" on Center\*\*

2x6 Exterior Walls 16" on Center\*\*

2x4 Interior Walls

40# Roof Load

## CUSTOMER CONTACT

Notes:

---

---

---

---