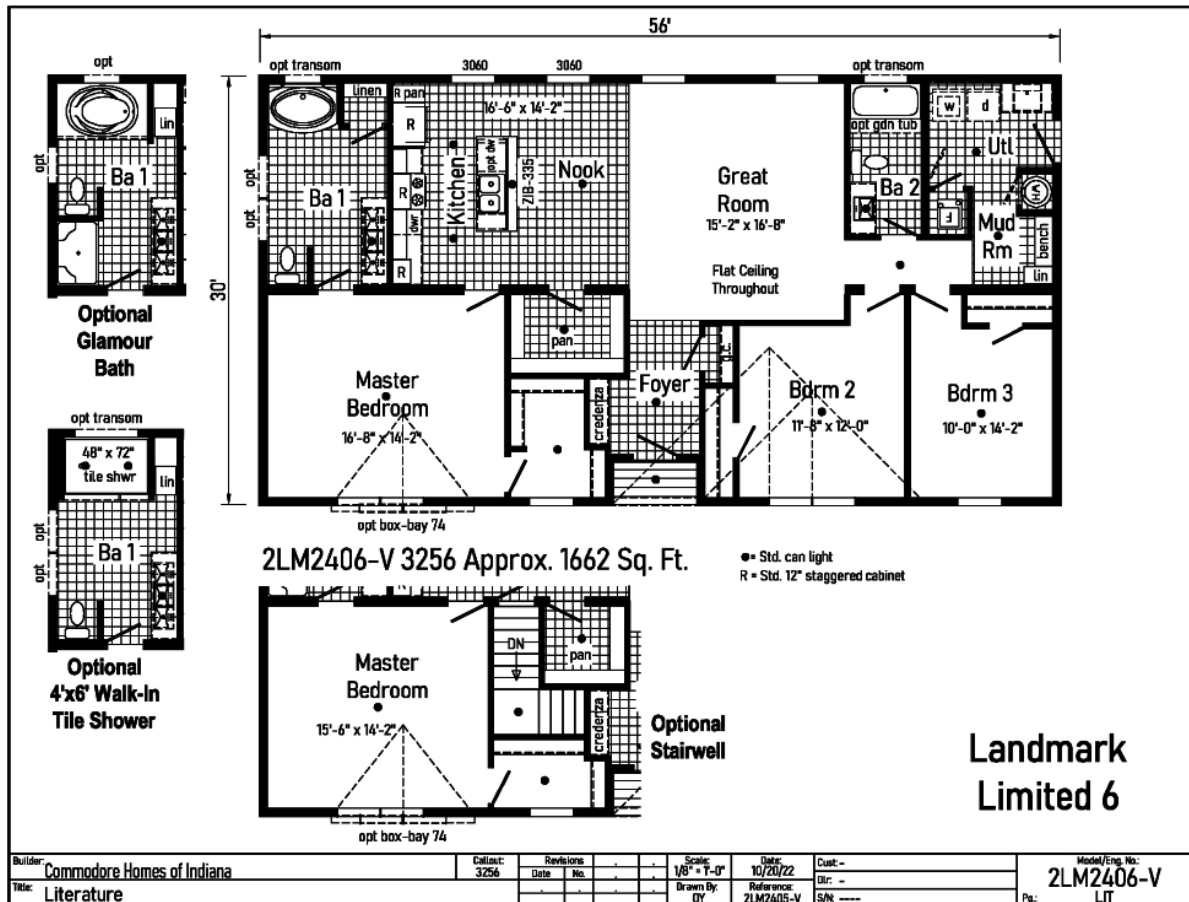


## PRINTABLE INFO SHEET

Series: Landmark Limited

Model: 2LM2406V Landmark Limited

6



## About This Model

Style: Ranch / Bedrooms: 3 / Bathrooms: 2 / Square Feet: 1662

## CUSTOMER CONTACT

Notes:

## PRINTABLE INFO SHEET

**Series: Landmark Limited**

**Model: 2LM2406V Landmark Limited**

**6**



## Standards & Features

### Interior

Smooth Drywall Throughout  
Flat Ceiling Throughout  
Stipple Ceiling  
Coveless Ceiling Joints  
8' Sidewall Height  
Recessed LED Lighting  
Mortise Door Hinges  
Metal Interior Passage Sets  
Door Stops  
White 2 1/4" Door & Window Casing  
White 3" Baseboard Moulding  
White 2-Panel Doors  
Smoke Detectors with Battery Back-Up  
Wire Shelving in Guest Closet  
Brushed Nickel Interior Hardware

### Exterior

Gatsby Light at Front Door  
Gatsby Light at Rear Door  
GFI-Protected Exterior Receptacles at Doors  
Vinyl Dutch Lap Siding with Larger  
Starter Strip to Cover Sill Plate  
O.S.B. Sheathing  
Fixed Roof with 10" Eaves (26'8" & 30')  
16" Eaves (27'4")  
Architectural Shingles  
Ridgevent Roof Ventilation System  
3/0x6/8 6-Panel Fiberglass Front and Rear  
Door with Deadbolt Lock  
Heritage Vinyl Insulated Low-E Argon  
Windows with no grids

### Exterior (continued)

Raised Panel Shutters on Front Door Side

### Kitchen

Whirlpool Black Deluxe 30" Gas  
Free Standing Range  
Power Range Hood with Light  
Whirlpool Black 18 Cubic Foot,  
No-Frost Refrigerator w/ Ice maker  
Stainless Steel Double Bowl Sink (33x22x8)  
One USB Receptacle

### Baths

One Piece Fiberglass Tub/Shower  
Garden Tub/Shower-Master Bathroom  
Tub Overflows  
Anti-Scald Valves on Showers & Tubs  
1.6 Gallon Per Flush Elongated Toilets  
China Stool, Tank, and Lid  
China Sinks with Overflows and Pop-Up  
Drains  
Lighted Vent Fan in Each Bath  
Recessed LED Lighting  
Pencil Edge Mirrors

### Cabinetry

Hardwood Stiles  
3/4 Overlay Hardwood Mission Flat  
Panel Cabinet Doors  
Evermore Custom Cabinetry  
Crown Moulding on Overhead Cabinets  
Cabinet Pull Hardware  
30"/42" Staggered Wall Overhead Cabinets  
or 42" Overhead Cabinets

## CUSTOMER CONTACT

Notes:

---

---

---

---

## PRINTABLE INFO SHEET

Series: Landmark Limited

Model: 2LM2406V Landmark Limited

6



## Standards & Features (continued)

### Cabinetry (continued)

Matching Lined Overhead Cabinets

Adjustable Shelves in Overhead Cabinets

Dovetail Drawer Construction

75#Drawer Guides

Base and Center Shelf in Base Cabinets

WilsonArt Laminate Countertops with

Laminate Edging

4" WilsonArt Laminate Backsplash

36" High Vanities

Base Shelf in Vanities

Bump-out Staggered Wall Cabinet over Range

Refrigerator Surround

### Utilities

200 AMP Electrical Service

Copper Wiring Throughout

Bryant Gas Furnace w/ N Coil

- Perimeter Heat

- Furnace Door

- Fiberglass Heat Ducts

- Air Return System

Programmable Thermostat

40 Gallon Electric Water Heater with Pan

Structured Flow Brushed Nickel Faucets

Main Water Line Shut-Off Valve

Water Shut-Off Valves - Where Accessible

Plumb and Wire for Washer

Wire and Vent for Dryer

One Exterior Water Faucet

Recessed Dryer Box (where applicable)

### Insulation

R-19 Fiberglass Insulation in Walls

R-38 Avg. Blown Insulation in Ceiling

### Flooring

SHAW 15 oz. Carpet w/ ShawGuard

Carpet Protector

Rebond Carpet Pad with Tackstrip

Carpet Installation

No-Wax Vinyl Floor Coverings

Entry Foyer Vinyl Flooring

### Bedrooms

Recessed LED Lighting

Egress Window in Each Bedroom

Wire Shelving in Wardrobes

LED Light in All Walk-In Closets

### Construction

2x10 Floor Joists 16" on Center\*\*

2x6 Exterior Walls 16" on Center\*\*

2x4 Interior Walls

40# Roof Load

### Optional Manufactured Home:

R-11 Floor Insulation, Recessed Frame Design without

Perimeter Blocking, 2x6 Floor Joist on 28 Wide

Models, 2x8 Floor Joist on 32 Wide Models, 30# Roof Load,

& 100 AMP Electrical Service

## CUSTOMER CONTACT

Notes:

---

---

---

---